



Fast Lines Belgium NV

Ernest van Dijckkaai 16/17
2000 Antwerpen
BELGIUM

VAT No. BE 416.137.027

mv FAST SUS – main particulars - last updated 26.01.2024



IMO Nr **9136096**

Type : General Cargo , Class : BV nr 39U532

Built : 1996 in Barkmeijer Stroobos Holland (keel laid 01-08-1995)

Flag : Belgium ,

Home Port : Antwerpen Call Sign : ONEO , MMSI: 205482000

L.O.A : 89,98 m L.P.P. : 84,98 m

Beam: 12,50 m Depth moulded : 06,00m

DWAT : 3234 DWCC summer : 3000 , DWCC winter : 2900 Light Ship : 1115

Draft fully laden : 04,65 m (summer) , Draft fully laden : 04,55 m (winter)

Airdraft in ballast : 11,00 m (with masts folded)

Distance between keel and top of hatchcoaming : 7,45 m (to calculate distance between waterline and top of hatch coaming pls deduct draft)

Draft in full ballast : F - 2,65 m A – 03,45 m

Freeboard (summer) 1180mm

TPC – 10,50 mt/cm , FWA – 103 mm

Grain capacity : 144308 cuft / 4086 cbm without bulkheads

Bales capacity : 142803 cuft / 4043,71 cbm with 2 bulkheads inside the hold

1 Hold - dimensions : lenght 63,00m x breadth 10,20m x height 06,43 m

1 Hatch - dimensions : 63,00m x 10,20m – Hatch covers pontoon type 10 sections

GT : 2055 NT : 1117 according to 1969 convention

Permissible loads : Tanktop (steelfloored) : **12 mt /m2** Hatch covers : **1,6 mt/m2**

Bulkheads : 2 moveable bulkhead in 4 positions

Container intake : 20 FT containers : 76 TEU in the hold + 40 TEU on deck = total 116 TEU

40 FT containers : 32 FEU in the hold + 20 FEU on deck = total 52 FEU

Class : BV - AUT-UMS Strenghtbottom

Pandi : The Standard Club Europe

Telephone : **0032 489 354233** , Inmartsat Email : 420548210@inmc.eik.com

Email in the ports : mv.fastsus@fastlines.be

Main engine : MAK 8M20 - 1000 kW / 900 rpm **EEXI = 16,52 g CO₂ / mt * nm**

Speed consumption : 9 KN on 4,5 cbm Gasoil per day , 0,5 cbm Gasoil per day for generator

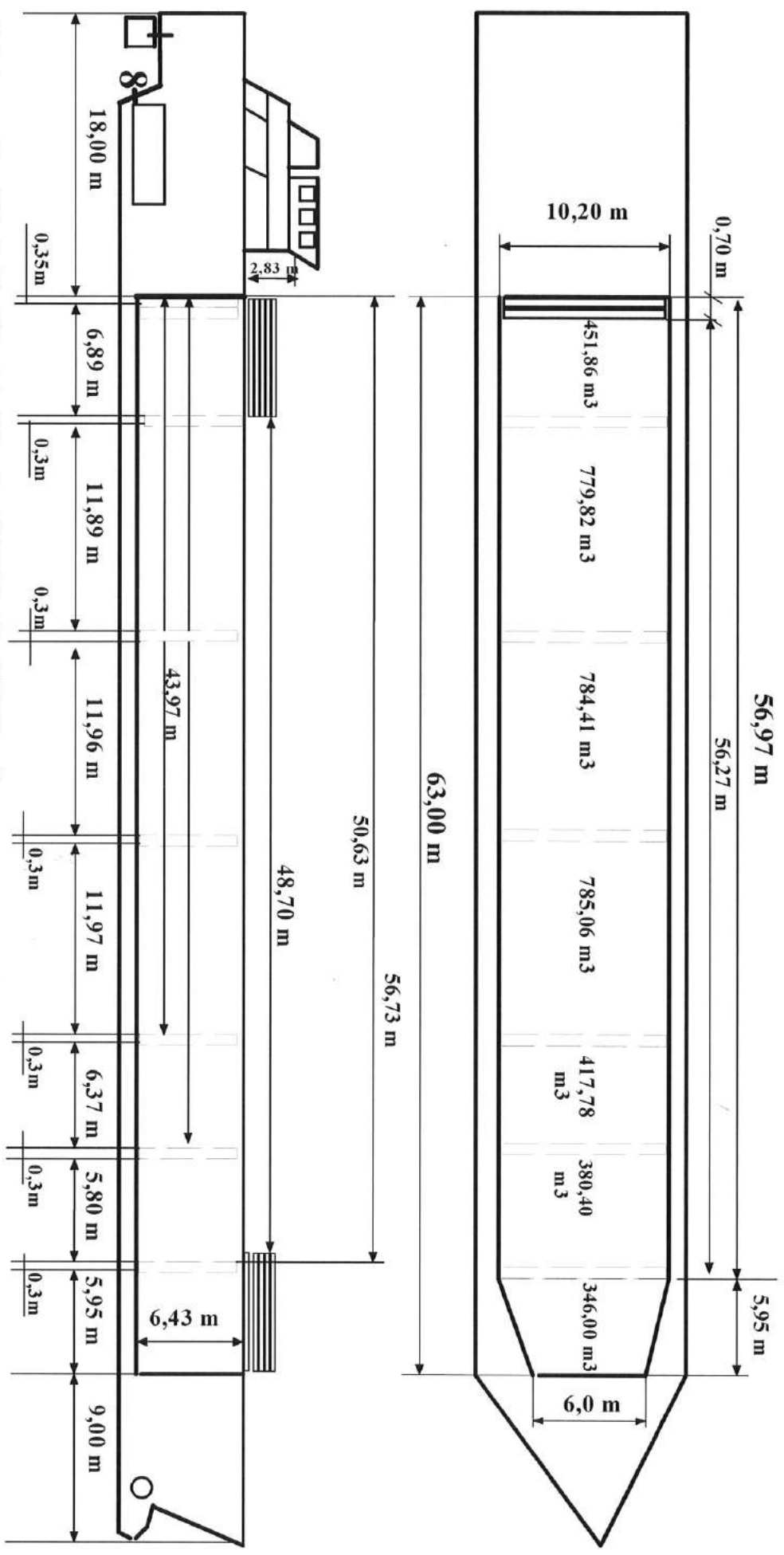
Vessel fitted with bowthruster : Veth type VT 150 output 220 kW

Rudder : Flap type – manufacturer : Hinze , **Equipped with BWTS : Erma First FIT300**

Capacities : 177 cbm Gasoil (0,86 mt/cbm) FW:58 cbm , LO: 3 cbm , Ballast : 1501 cbm

All particulars believed to be correct and given in good faith , but without guarantee

FAST SUS - hold dimensions : 63,00m (length) x 10,20m (width) x 6,43 m (height)
 max permissible tanktop load 12 mt/m²



Total capacity of the hold without bulkheads : 4086,34 m³ = 144308 cuft

Total capacity of the hold with 2 bulkheads : 4043,71 m³ = 142803 cuft (1st bulkhead - in transport position - well aft, 2nd bulkhead - in well aft or division position)

4046,99 m³ = 142918 cuft (two bulkheads - in division position)

Dimensions of 1 bulkhead : 10,20m (width) x 6,415 m (height) x 0,3m (thick) = 19,63m³

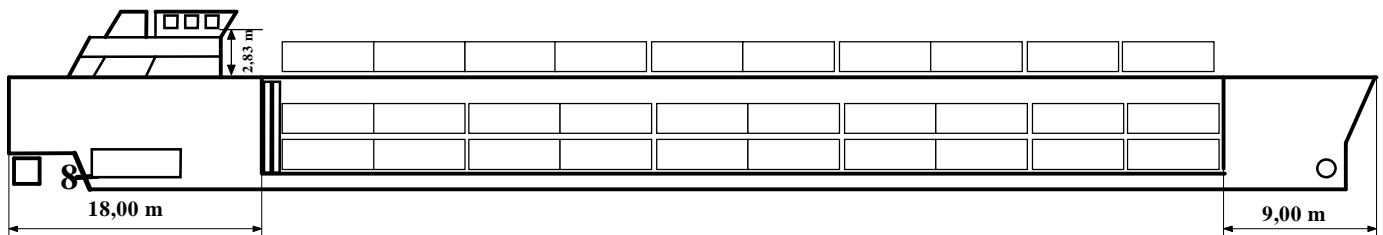
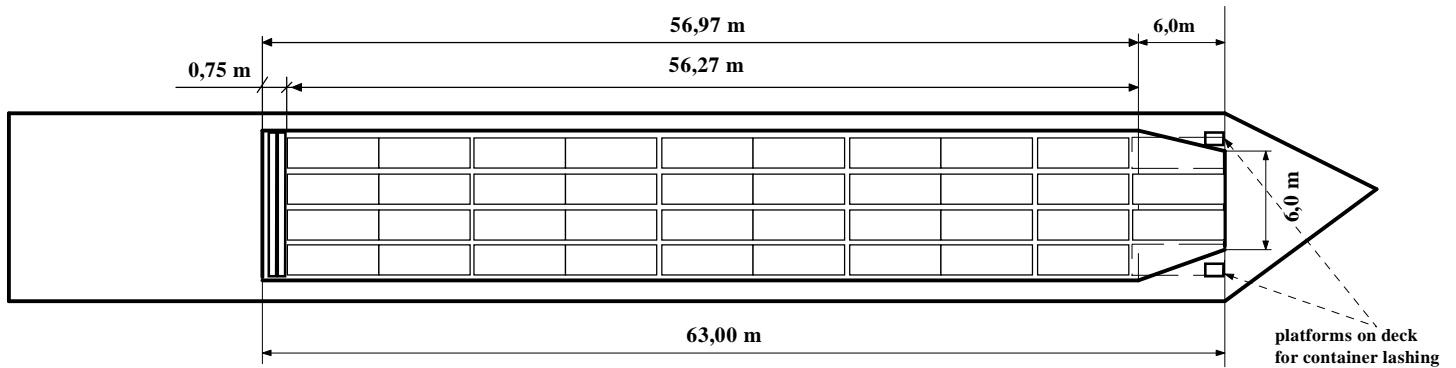
Always take into consideration spaces between bulkheads and cargo , between rows , layers of cargo for lashing , securing and handling purposes
 All above details believed to be correct , given in good faith but without guarantee

FAST SUS - containers intake

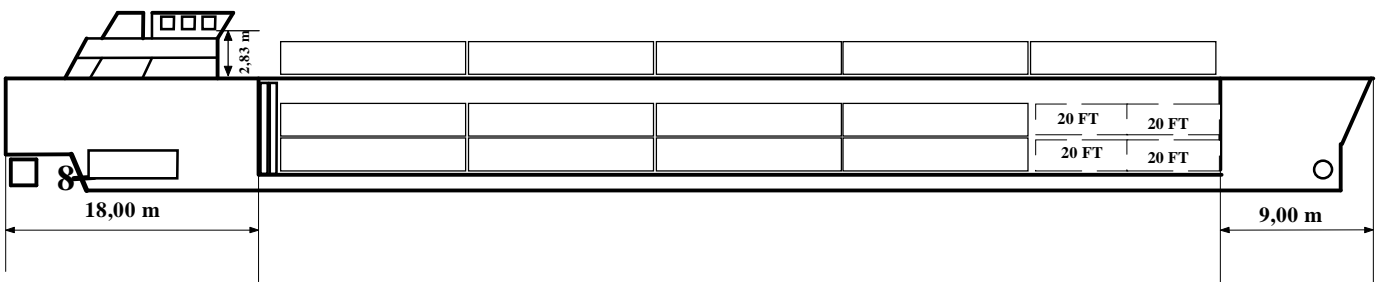
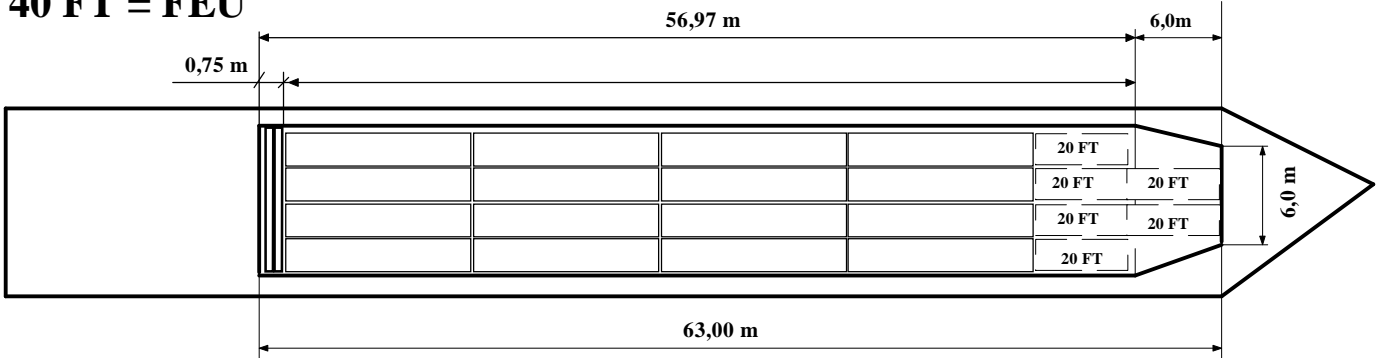
20 FT = TEU

TOTAL 20 FT CONTAINER INTAKE = 116 TEU

WHEREOF : IN THE HOLD : 2 LAYERS x 38 TEU = 76 TEU
 ON DECK : 1 LAYER x 40 TEU = 40 TEU



40 FT = FEU



TOTAL 40 FT CONTAINER INTAKE = 52 FEU

WHEREOF IN THE HOLD : 2 LAYERS x 16 FEU = 32 FEU
 ON DECK : 1 LAYER x 20 FEU = 20 FEU

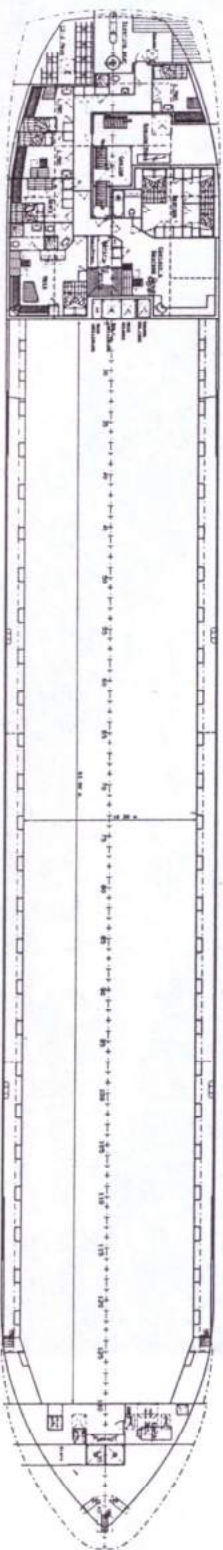
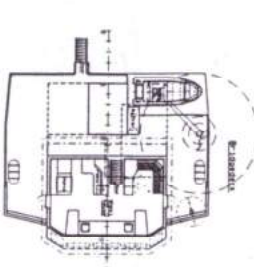
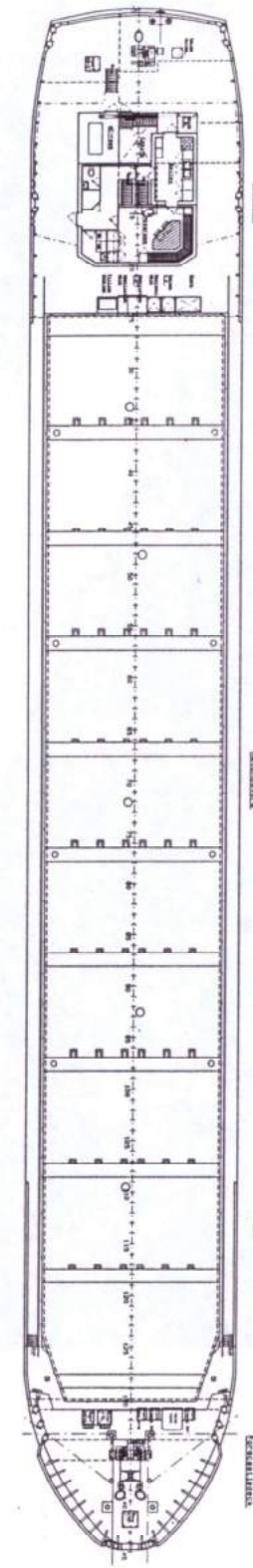
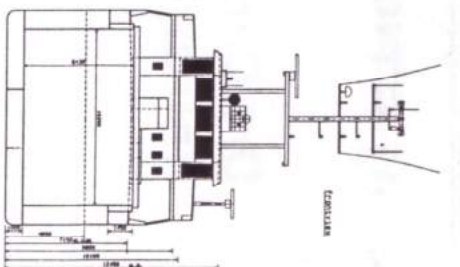
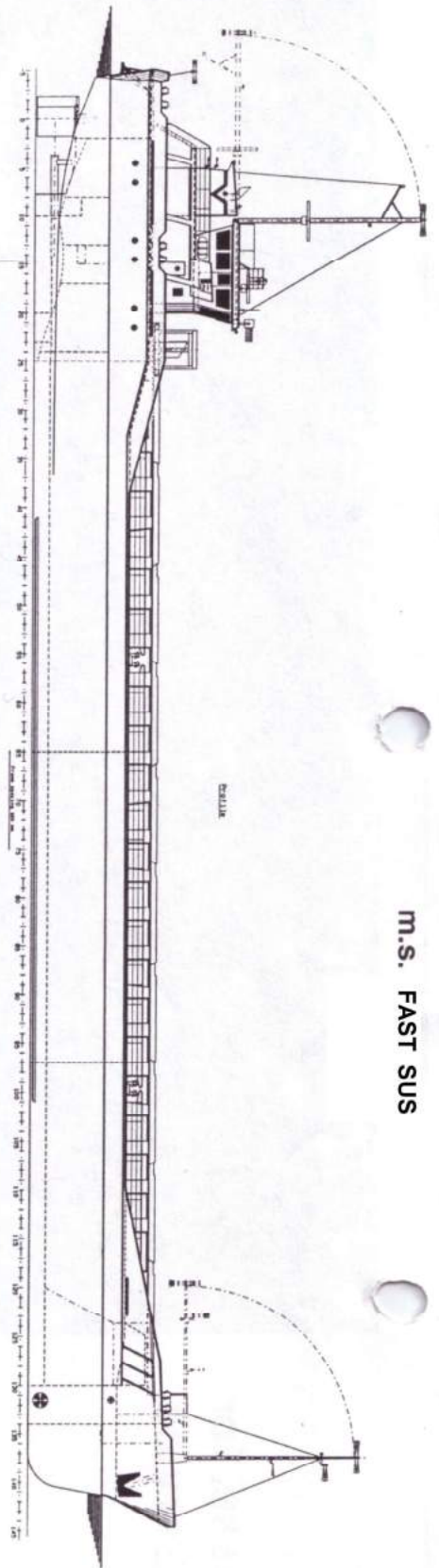
40FT CONTAINER INTAKE IN THE HOLD IS REDUCED DUE TO WRONG LOCATION OF CONTAINERS POCKETS ON THE TANKTOP IN FOREPART

AFTER LOADING 32 x 40 FT CONTAINERS IN THE HOLD
 THERE WILL BE SPACE INSIDE FOR ADDITIONAL 12 x 20 FT = 12 TEU

HOLD dimensions : 63,00m (length) x 10,20m (width) x 6,43 m (height)

Maximum permissible load:
 TANKTOP 12 mt / m²
 HATCH COVERS : 1,5 mt / m²

M.S. FAST SUS



Main particulars
 Length over all 89.98 m
 Length b.p.p 84.99 m
 Breadth mid 12.50 m
 Depth 6.00 m
 Draught 4.64 m
 Deadweight 3234 tons
 Gross tonnage 1996 GT (2055 GT)
 Speed 11 kn
 Class Bureau Veritas
 1/3 Cargo Ship
 Deep Sea MACH
 AUT MS
 Heavy Cargo BRG

Hold particulars
 Length 63.00 m
 Width 10.20 m
 Height 6.43 m
 Capacity 144300 cdt
 Hatchcovers / mat / type 10 / steel / ponton
 Movable bulkheads 2
 Containercap. in hold 76 TEU
 Containercap. on deck 40 TEU
 116 TEU total

Tank capacities
 Engine room bulkhead A60 insulated
 CO₂ fire extinguishing system in hold
 Fuel 177 m³
 Freshwater 58 m³
 Lub oil 3 m³
 Ballastwater 1501 m³

Machinery
 Mainengine Type MAK 8M20
 Output 1000 kW / 900 rpm
 Reduction gear Lohmann + Stalderort
 Type / reduction GWE 39.43S / 4:1
 Propeller ø 2350 mm, 5 blades
 Rudder Hinze, flaptype
 Steeringgear Ulstein / Frydenbo
 Auxiliary engine I Valmet 620 DSG / 90 kW / 1500 rpm
 Type / output Stamford
 Alternator I UCM 274 E 23
 Type 112 KVA
 Capacity Valmet 620 DSG / 90 kW
 Type / output Stamford
 Alternator II UCM 274 D 23
 Type 112 KVA
 Capacity Valmet 320 DSG / 42 kW / 1500 rpm
 Type / output Stamford
 Alternator III UCM 224 G 23
 Type 60 KVA
 Capacity

Bowthrusterengine
 Type Scania DS 11
 Bowthruster Veth VT 150 / 220 kW
 Type / output K & R S-100-80-175
 Capacity 140 m³ / h at 15 mmwc
 Bilgewater sep. Facel
 Type OPeS -5BV
 Capacity 1 m³ / h
 Fuel separator Alfa Laval MAB 103B
 Type 0.9 m³ / h
 Capacity Spene
 Type HFL 2/77
 Capacity 12 m³ / h at 30 bar
 AC unit Hamen & Hopman

Navigation equipment
 GMDSS equipped, with TOR and Inmarsat C Satcom